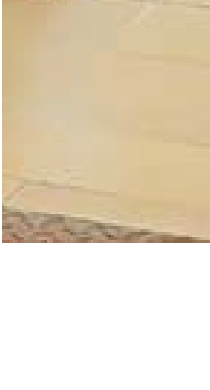
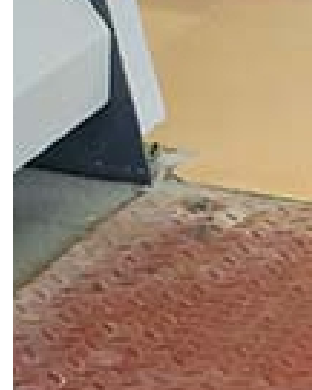
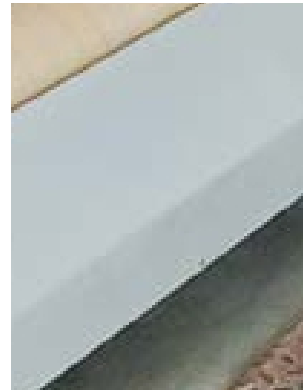
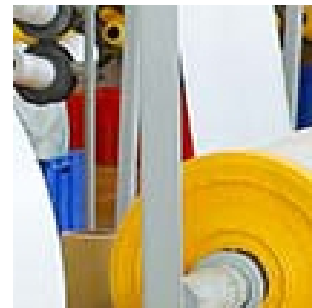
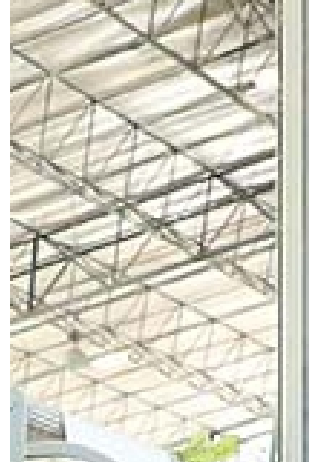


# **DHULEVA** INDUSTRIES

Manufacturer of Woven PP Bags & Fabrics



# Company Brief

**Dhuleva Industries** began its production in 2011. With the rising demand of PP fabric and bags in various industry sectors Dhuleva successfully started the manufacturing of 'PP Woven Bags & Fabric' with a driven and skilled workforce and committed leadership.

Dhuleva has highly technical state-of-the-art technology to provide product advancement to all its potential customers for bulk production to meet ever-growing demands of the industries.

Dhuleva's phenomenal growth is pillared on



**Superior Quality  
Products**



**On  
Time Delivery**



**Customer  
Oriented Services**

# Leadership

Dhuleva is lead by Mr. Sanjay Banthia & Mr. Sambhav Banthia

**Mr. Sanjay Banthia** hales from a background in economics and mathematics. He holds a diversified portfolio of over 35 years of business experience. He pioneered in timber business in late 80's, thereupon he held the distributorships of some of the biggest names in industrial products such as Castrol, Bechem Lubricants, Fenner India & Adorfontech to name a few. In 2011 he ventured into manufacturing of woven PP Bags and supplies to top cement plants in the country.

**Mr. Sambhav Banthia** has studied Business Administration from London University and International Marketing from NYU. He has also completed Entrepreneurship Leadership programme from IIM-Ahmedabad. Mr. Banthia has more than a decade of work experience across a diversified portfolio of businesses including woven pppbags, renewable energy, mining and affordable housing market. He established Dhuleva industries in 2011. Under his leadership Dhuleva Industries grew and is currently the packaging providers for some of the top Cement brands of India including Ultratech, Wonder and Shree to name a few. He entered into Real Estate sector with the launch of Archi's Galaxy , a 600 apartment township in Udaipur, which "Redefined Affordable Housing" with its Quality, Affordable prices and timely possession. He thereafter establishment Rudra Infratech, which is into mining and manufacturing of Aggregate and M-sand. Rudra Msand is supplied to all the top RMC plants in the region.

# Our Team

We have a close-knit team that consists of dynamic, driven and talented achievers

Our team consists of professionals with over 2 decades of experience across Engineering, Finance & Sales and Marketing

As a team we are keen on developing innovating solutions and learning new technologies making sure that the end result is the very best

We prefer challenging tasks that gives us opportunity to work to the best of our capabilities

Customer satisfaction is very important to us hence we always deliver the orders on the earliest possible dates providing customers an ease to work with us

# Product Range

Dhuleva has a production capacity of 2400 tons fabric per year equivalent to 36 million Woven Bags per year



- ◆ Cement Bags
- ◆ Sand Bags
- ◆ Clear Woven Bags

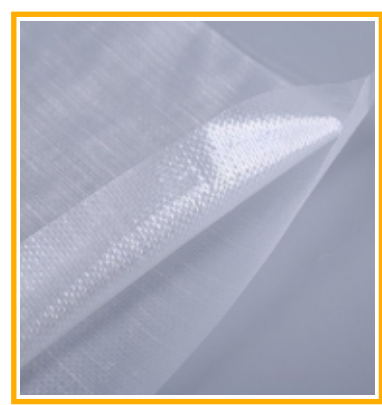
- ◆ PP Bags with Liner
- ◆ PP Laminated Bags
- ◆ Top Hemmed Bags

- ◆ Zig Zag Cutted Bags
- ◆ Valve type Bags
- ◆ Foodgrain Bags
- ◆ Rice Bags

## Fabric (Laminated and Normal) >>>

### Range & Sizes

- ◆ Double/Tubular fabric from 35cm to 95 cm
- ◆ Flat Fabric from 70cm to 190cm
- ◆ 40 to 105 GSM + Lamination if required
- ◆ 450 to 1200 Denier



# Product Application - Uses

The PP woven bags are ideal for the packaging of products, which include the following



Cement, Chemicals,  
Urea, Minerals, Resin,  
Polymers, Rubber



Fruits, Vegetables



Food grains, Seeds, Flour,  
Spices, Pulses,  
Agro Products, Fish  
Meals, Cattle seed



Sugar, Salt, Sand,  
Metal parts, Concrete  
elements



# Our Competence - Plant Infrastructure



Dhuleva has installed Advance technology Machine of 'Lohia Starlinger Ltd', consisting of

- ◆ Lorex E90B 1000 Tape Machine having melting pump for homogenous material flow, on line screen change , online slitting of tape & inverter cheese winder for better winding quality to reduce denier variation & improve tenacity of tape for making from 500-1200 denier tape.
- ◆ Circular Loom Model Ace 6(S) - 32 nos. for weaving fabric from 18-28 inches fabric.
- ◆ 3 numbers of Bag cutting & bottom stitching machine (BCS) from Lohia & Taiwan make for optimum conversion of cement bags with color sensor for accuracy of cutting size.
- ◆ Delphys MX Elite UPS of 250 KVA' of SOCOMEC UPS India Pvt. Ltd. & 320 KVA DG of Cummins for uninterrupted production of best quality tape.
- ◆ On line Flexographic 4/6 color printing & cutting machine as well as 'roll to roll' printing machine with all latest technology.
- ◆ Quality Control Lab as per International standard with fully equipped machinery, having Digital tensile machine, Dial gage, electronic physical balance, electronic weighing scale, denier testing equipment etc to ensure quality packaging for your products.
- ◆ We have engaged senior production staff having wide experience of 18-25 Years in manufacturing of Cement Bags, PP Fabrics, Sugar Bags, Food Grain Packings.

# Our Customers

We are registered suppliers of the following companies:



and many other mineral companies.

## Process Control

- ◆ Having state-of-the-art infrastructure equipped with advanced production facilities, we are capable for bulk production of PP fabric/bags to meet the ever-growing demands of the industries.
- ◆ Our production unit is located in one of the fully developed industrial area of Udaipur (Rajasthan).
- ◆ Besides the production unit, we also have facilities for quality testing, product storage & packaging.
- ◆ All our PP production process is supported by the latest technology based systems that enable maximum efficiency and utmost interdepartmental coordination.



## Quality Commitment

Our phenomenal growth is pillared on superior quality products, cost effectiveness and customer oriented services

While, there are advanced process control systems at our manufacturing unit, which are based on the latest computer technology, we also have an in-house Quality Assurance & Control Division

Quality Assurance & Control Division continuously monitors the entire PP production processes right from material sourcing till delivery

## Work Commitment

- ◆ We are committed to produce and supply products as per customers' requirements
- ◆ We commit only what we can perform and we perform what we commit.
- ◆ We guarantee our clients a safe and opportune delivery of products
- ◆ We ensure delight to our prestigious clients by offering superlative products at the most competitive prices



# Manufacturer of Woven PP Bags & Fabrics

## Dhuleva Industries

**Corporate Office :** Pragati  
99 Moti Magari Scheme,  
Udaipur-313001 (Rajasthan)

**Works :** B-501 Bhamashah  
Industrial Area, Kaladwas,  
Udaipur-313001 (Rajasthan)

 **Contact :**  
+91 9772221666

 **Website :**  
[www.dhulevaindustries.com](http://www.dhulevaindustries.com)

 **E-mail :**  
[dhulevaindustries@yahoo.com](mailto:dhulevaindustries@yahoo.com)

